



STAR RENAISSANCE

EARLY LITERACY, READING, AND MATH ASSESSMENT



Purpose: Students in grades 1-9 (reading) and grades 1-8 (math) are assessed 3 or more times annually to measure student learning. This nationally-normed computer adaptive assessment provides near-instant feedback on student performance and learning. Each STAR assessment takes approximately 25 minutes to complete.

TESTING WINDOWS

Exact assessment dates vary by school

FALL

August 30th -
September
17th

WINTER

January 3rd -
January 21st

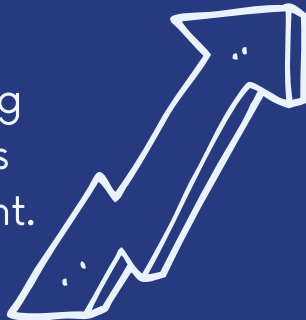
SPRING

April 4th -
May 27th

BENEFITS:

STUDENTS & PARENTS

Provides valuable information regarding growth and progress toward skill attainment.



TEACHERS

Helps teachers provide individualized instruction to accelerate learning for all students.



UNDERSTANDING SCORES



[Click here to Understand the STAR Early Literacy Parent Report.](#)



[Click here to Understand the STAR \(Math and Reading\) Parent Report.](#)

IF YOU NEED ADDITIONAL INFORMATION ON YOUR CHILD'S ACADEMIC PERFORMANCE, PLEASE CONTACT YOUR CHILD'S SCHOOL.



RSD Large Scale Assessment Calendar

